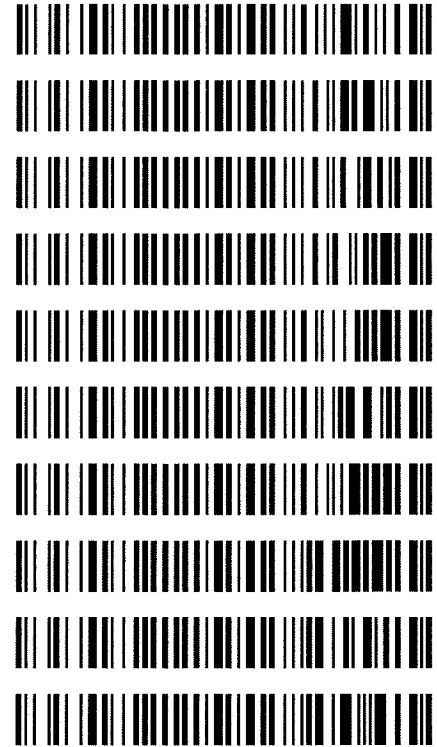


Worklist: 1621

<u>LAB_CASE</u>	<u>ITEM</u>	<u>TASK_ID</u>	<u>DESCRIPTION</u>
C2017-0468	1	80042	AM 3 Urine Carboxy-THC
C2017-0508	1	80043	AM 3 Urine Carboxy-THC
C2017-0513	1	80044	AM 3 Urine Carboxy-THC
C2017-0516	1	80045	AM 3 Urine Carboxy-THC
C2017-0523	1	80046	AM 3 Urine Carboxy-THC
C2017-0526	1	80047	AM 3 Urine Carboxy-THC
C2017-0528	1	80048	AM 3 Urine Carboxy-THC
C2017-0536	1	80049	AM 3 Urine Carboxy-THC
C2017-0537	1	80050	AM 3 Urine Carboxy-THC
C2017-0547	1	80051	AM 3 Urine Carboxy-THC



Area Percent Report

Data Path : D:\DATA\2017\3-23-17 Gen Drug\
 Data File : 02201034.D
 Acq On : 23 Mar 2017 23:19
 Operator : Instrument 65198
 Sample : negative control
 Misc : lot 12517; am 3
 ALS Vial : 22 Sample Multiplier: 1

Integration Parameters: autoint1.e
 Integrator: ChemStation

Method : D:\DATA\2016\852016a ta\psilocyn .D\TOXI-A 10115.M
 Title :

Signal : EIC Ion 371.00 (370.70 to 371.70): 02201034.D\data.ms

peak #	R.T. min	first scan	max scan	last scan	PK TY	peak height	corr. area	corr. % max.	% of total
1	3.814	3	6	15	PH 2	19550	404326	15.92%	11.719%
2	3.897	15	22	30	VV	188959	2539618	100.00%	73.606%
3	3.981	30	37	46	VV 2	7558	213154	8.39%	6.178%
4	4.074	46	54	60	VV	7213	203583	8.02%	5.900%
5	4.627	151	157	164	PV	5366	89593	3.53%	2.597%

Sum of corrected areas: 3450275

Signal : EIC Ion 473.00 (472.70 to 473.70): 02201034.D\data.ms

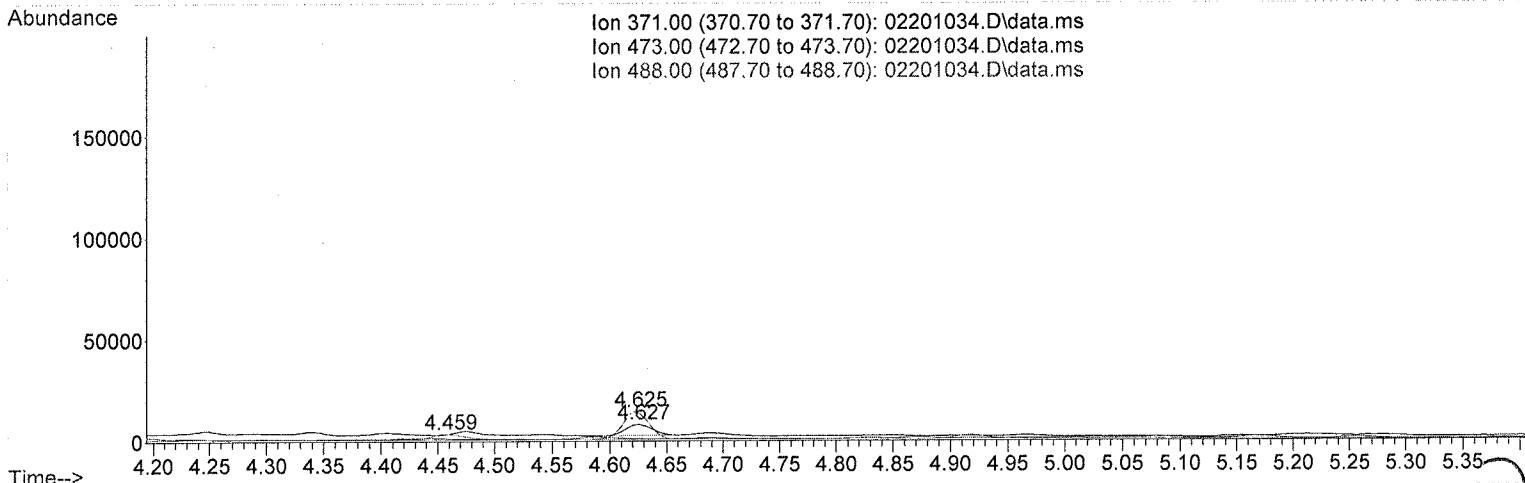
peak #	R.T. min	first scan	max scan	last scan	PK TY	peak height	corr. area	corr. % max.	% of total
No peaks were detected using the method integration parameters!									

Signal : EIC Ion 488.00 (487.70 to 488.70): 02201034.D\data.ms

peak #	R.T. min	first scan	max scan	last scan	PK TY	peak height	corr. area	corr. % max.	% of total
1	4.459	109	126	137	BV 3	2705	67854	30.14%	23.160%
2	4.625	137	157	165	VV	13413	225120	100.00%	76.840%

Sum of corrected areas: 292974

TOXI-A 10115.M Fri Mar 24 07:31:39 2017



Area Percent Report

Data Path : D:\DATA\2017\3-23-17 Gen Drug\
 Data File : 02301036.D
 Acq On : 23 Mar 2017 23:38
 Operator : Instrument 65198
 Sample : brc3 control
 Misc : lot 68430; am 3
 ALS Vial : 23 Sample Multiplier: 1

Integration Parameters: autoint1.e
 Integrator: ChemStation

Method : D:\DATA\2016\852016a ta\psilocyn .D\TOXI-A 10115.M
 Title :

Signal : EIC Ion 371.00 (370.70 to 371.70): 02301036.D\data.ms

peak #	R.T. min	first scan	max scan	last scan	PK TY	peak height	corr. area	corr. % max.	% of total
1	3.897	14	21	29	BV	7501	124571	10.86%	9.119%
2	4.690	161	169	184	VV	66887	1146940	100.00%	83.960%
3	4.902	184	208	219	VB	4807	94542	8.24%	6.921%

Sum of corrected areas: 1366053

Signal : EIC Ion 473.00 (472.70 to 473.70): 02301036.D\data.ms

peak #	R.T. min	first scan	max scan	last scan	PK TY	peak height	corr. area	corr. % max.	% of total
1	4.692	159	169	190	BB	31640	563885	100.00%	57.902%
2	4.904	197	209	219	BB	3581	64643	11.46%	6.638%
3	5.170	233	258	278	BB	16229	345328	61.24%	35.460%

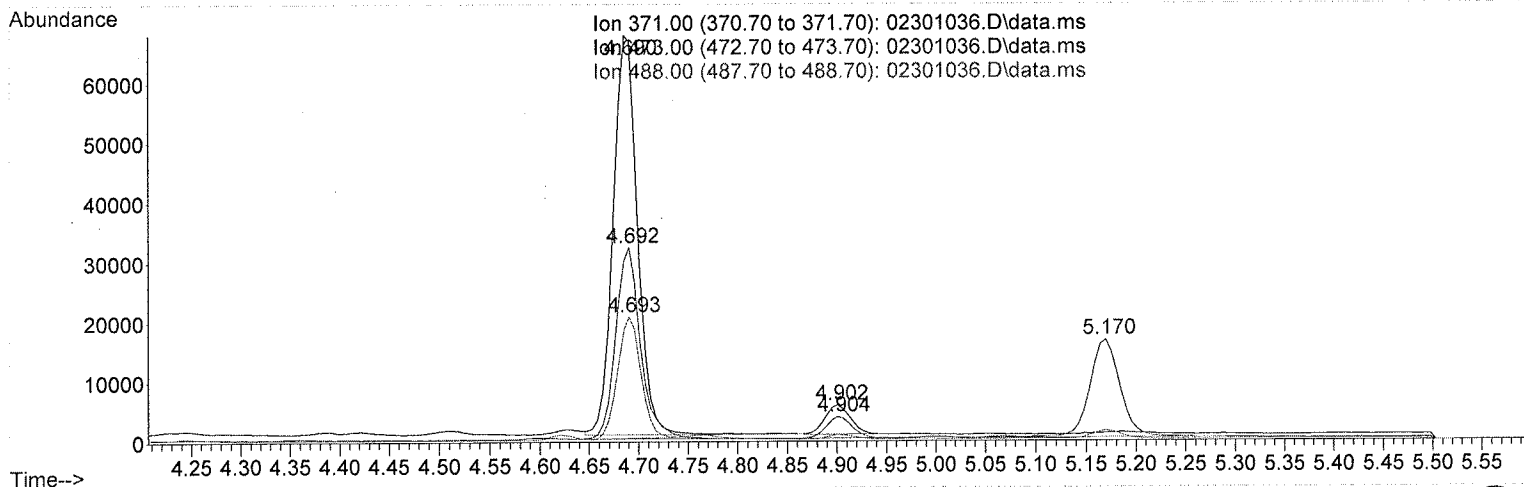
Sum of corrected areas: 973856

Signal : EIC Ion 488.00 (487.70 to 488.70): 02301036.D\data.ms

peak #	R.T. min	first scan	max scan	last scan	PK TY	peak height	corr. area	corr. % max.	% of total
1	4.693	162	169	178	PV	20009	332872	100.00%	100.000%

Sum of corrected areas: 332872

TOXI-A 10115.M Fri Mar 24 07:31:51 2017



[Handwritten signature]

Area Percent Report

Data Path : D:\DATA\2017\3-23-17 Gen Drug\
 Data File : 02101057.D
 Acq On : 24 Mar 2017 02:53
 Operator : Instrument 65198
 Sample : positive control
 Misc : FE03121501 in neg lot 31517; am 3
 ALS Vial : 21 Sample Multiplier: 1

Integration Parameters: autoint1.e
 Integrator: ChemStation

Method : D:\DATA\2016\852016a ta\psilocyn .D\TOXI-A 10115.M
 Title :

Signal : EIC Ion 371.00 (370.70 to 371.70): 02101057.D\data.ms

peak #	R.T. min	first scan	max scan	last scan	PK TY	peak height	corr. area	corr. % max.	% of total
1	3.813	3	6	16	BV 2	7474	89631	2.11%	1.336%
2	3.896	16	21	30	PV	162762	2156077	50.83%	32.140%
3	3.980	30	37	46	PV 3	2877	48654	1.15%	0.725%
4	4.074	46	54	65	VV	4176	81866	1.93%	1.220%
5	4.627	151	157	161	PV	5308	90003	2.12%	1.342%
6	<u>4.688</u>	161	169	192	VV	253611	<u>4242146</u>	100.00%	63.237%

** used to calculate min. corrected area of 371 BW*

Sum of corrected areas: 6708377

Signal : EIC Ion 473.00 (472.70 to 473.70): 02101057.D\data.ms

peak #	R.T. min	first scan	max scan	last scan	PK TY	peak height	corr. area	corr. % max.	% of total
1	4.690	160	169	189	PV	118141	1985210	100.00%	100.000%

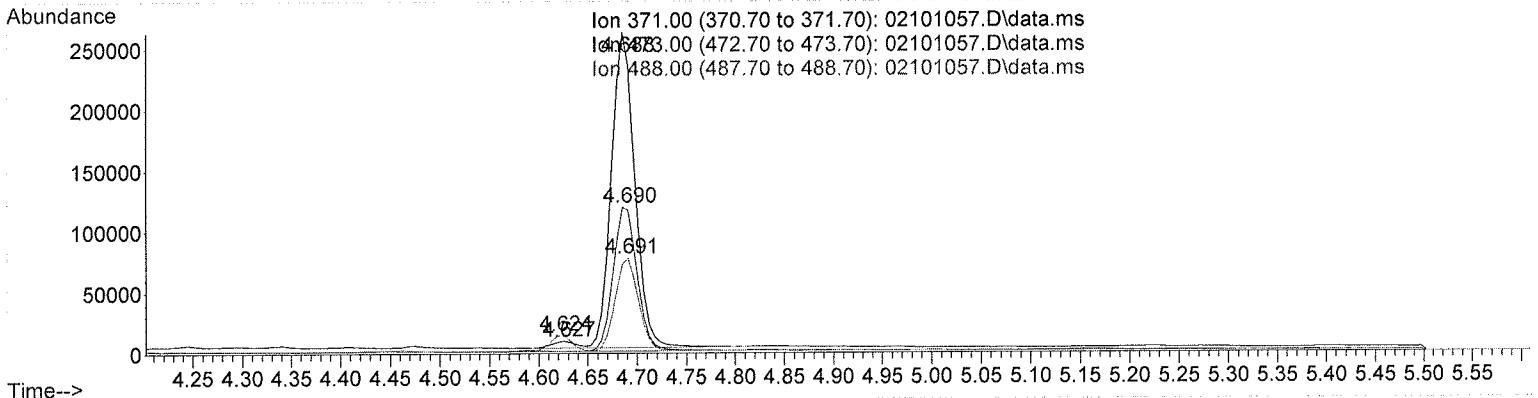
Sum of corrected areas: 1985210

Signal : EIC Ion 488.00 (487.70 to 488.70): 02101057.D\data.ms

peak #	R.T. min	first scan	max scan	last scan	PK TY	peak height	corr. area	corr. % max.	% of total
1	4.624	141	157	162	BV	12771	204212	16.30%	14.013%
2	4.691	162	169	187	VV	75376	<u>1253115</u>	100.00%	85.987%

Sum of corrected areas: 1457326

TOXI-A 10115.M Fri Mar 24 07:31:27 2017



BW

Area Percent Report

Data Path : D:\DATA\2017\3-23-17 Gen Drug\
 Data File : 02101035.D
 Acq On : 23 Mar 2017 23:29
 Operator : Instrument 65198
 Sample : positive control
 Misc : FE03121501 in neg lot 31517; am 3
 ALS Vial : 21 Sample Multiplier: 1

Integration Parameters: autoint1.e
 Integrator: ChemStation

Method : D:\DATA\2016\852016a ta\psilocyn .D\TOXI-A 10115.M
 Title :

Signal : EIC Ion 371.00 (370.70 to 371.70): 02101035.D\data.ms

peak #	R.T. min	first scan	max scan	last scan	PK TY	peak height	corr. area	corr. % max.	% of total
1	3.812	3	6	15	BV 2	11459	130192	2.75%	1.811%
2	3.897	15	21	30	PV	160249	2030640	42.82%	28.243%
3	3.980	30	37	46	PV	5639	93438	1.97%	1.300%
4	4.072	46	54	67	VV	5336	104181	2.20%	1.449%
5	4.626	149	157	161	BV	5355	88936	1.88%	1.237%
6	4.688	161	169	191	VV	290252	4742489	100.00%	65.961%

Sum of corrected areas: 7189877

Signal : EIC Ion 473.00 (472.70 to 473.70): 02101035.D\data.ms

peak #	R.T. min	first scan	max scan	last scan	PK TY	peak height	corr. area	corr. % max.	% of total
1	4.690	161	169	189	PV	137831	2230700	100.00%	100.000%

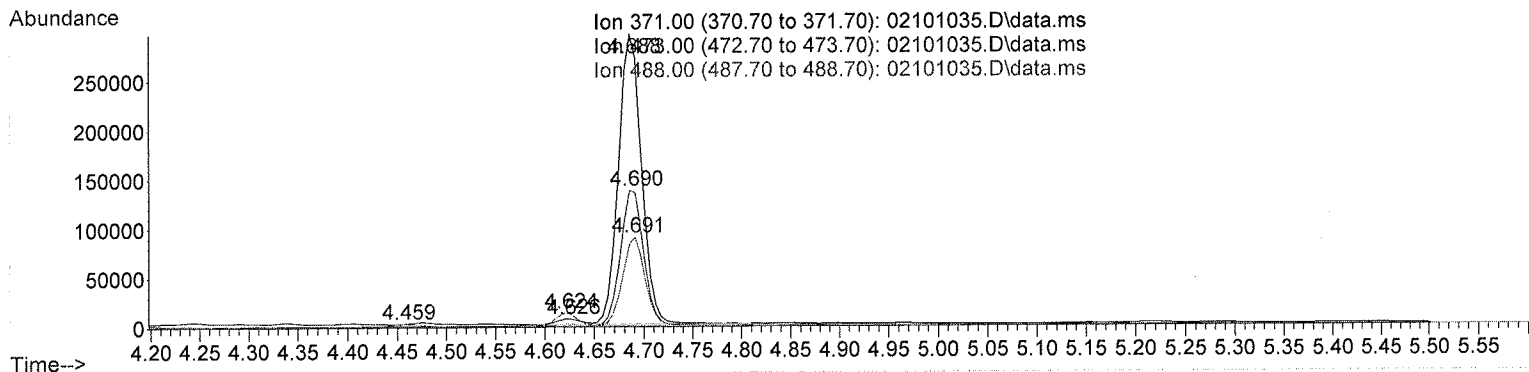
Sum of corrected areas: 2230700

Signal : EIC Ion 488.00 (487.70 to 488.70): 02101035.D\data.ms

peak #	R.T. min	first scan	max scan	last scan	PK TY	peak height	corr. area	corr. % max.	% of total
1	4.459	108	126	137	BB 3	2610	63113	4.43%	3.747%
2	4.624	146	157	162	BV	12682	197676	13.89%	11.737%
3	4.691	162	169	188	VV	88547	1423471	100.00%	84.516%

Sum of corrected areas: 1684260

TOXI-A 10115.M Fri Mar 24 07:31:16 2017



[Handwritten signature]

2.4.4 Carboxy-THC QC Calculations

Run Date: 3/23/2017

Case Calculations:

Lab Case #: BRC3-68430

EIC Ion 371 Corr. Area:	<u>1146940</u>	
EIC Ion 473 Corr. Area:	<u>563885</u>	473:371 Ratio: <u>0.492</u>
EIC Ion 488 Corr. Area:	<u>332872</u>	488:371 Ratio: <u>0.290</u>

Quality Control Calculations:

Retention Time acceptable range: 4.588 to 4.788

	<i>1st ctrl</i>	<i>2nd ctrl</i>
EIC Ion 371 Corr. Area:	<u>4242146</u>	<u>4742489</u>
EIC Ion 473 Corr. Area:	<u>1985210</u>	<u>2230700</u>
EIC Ion 488 Corr. Area:	<u>1253115</u>	<u>1423471</u>

Approximate minimum corrected area of 371 ion: ~ **848429**

Ratio of 473:371			
<i>1st ctrl</i>	<u>0.468</u>	<i>2nd ctrl</i>	<u>0.470</u>
		avg.	0.469

Accepted Range
(+/- 20%) 0.375 - 0.563

Ratio of 488:371			
<i>1st ctrl</i>	<u>0.295</u>	<i>2nd ctrl</i>	<u>0.300</u>
		avg	0.298

Accepted Range
(+/- 20%): 0.238 - 0.357

Carboxy-calculation sheet
Revision 0 effective date 10/23/13
Issuing authority: Quality Manager



Area Percent Report

Data Path : D:\DATA\2017\3-24-17 cthc diluted\
 Data File : 02201001.D
 Acq On : 24 Mar 2017 09:54
 Operator : Instrument 65198
 Sample : negative control
 Misc : lot 12517; am 3
 ALS Vial : 22 Sample Multiplier: 1

Integration Parameters: autoint1.e
 Integrator: ChemStation

Method : D:\DATA\2016\852016a ta\psilocyn .D\TOXI-A 10115.M
 Title :

Signal : EIC Ion 371.00 (370.70 to 371.70): 02201001.D\data.ms

peak #	R.T. min	first scan	max scan	last scan	PK TY	peak height	corr. area	corr. % max.	% of total
1	3.843	8	11	21	VV 2	8679	136781	5.05%	4.526%
2	3.929	21	27	37	PV	200780	2708948	100.00%	89.640%
3	4.106	52	60	72	PV	4068	82652	3.05%	2.735%
4	4.666	158	164	172	PV	5173	93661	3.46%	3.099%

Sum of corrected areas: 3022042

Signal : EIC Ion 473.00 (472.70 to 473.70): 02201001.D\data.ms

peak #	R.T. min	first scan	max scan	last scan	PK TY	peak height	corr. area	corr. % max.	% of total
--------	----------	------------	----------	-----------	-------	-------------	------------	--------------	------------

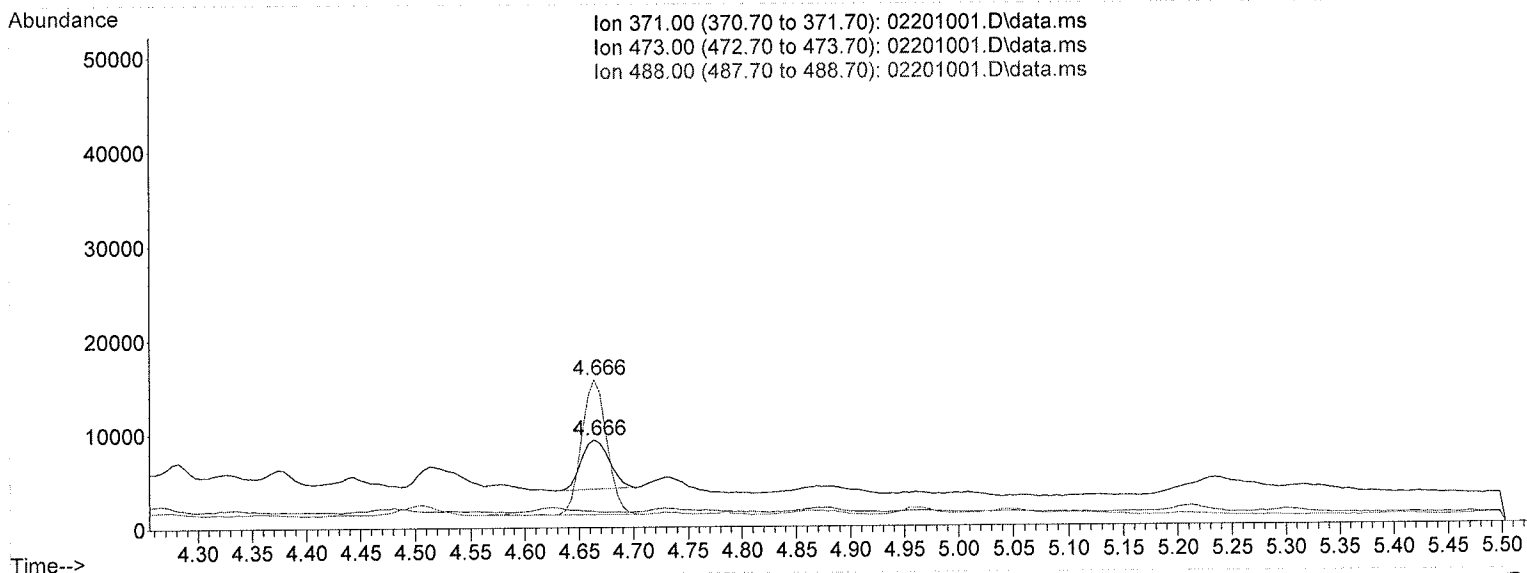
No peaks were detected using the method integration parameters!

Signal : EIC Ion 488.00 (487.70 to 488.70): 02201001.D\data.ms

peak #	R.T. min	first scan	max scan	last scan	PK TY	peak height	corr. area	corr. % max.	% of total
1	4.666	145	164	173	VV	14131	231857	100.00%	100.000%

Sum of corrected areas: 231857

TOXI-A 10115.M Fri Mar 24 10:41:58 2017



*C2017-0536-1
 & C2017-0537-1
 were diluted &
 rerun with these
 controls.*

*BW
 3-24-17*

BW

Area Percent Report

Data Path : D:\DATA\2017\3-24-17 cthc diluted\
 Data File : 02301003.D
 Acq On : 24 Mar 2017 10:13
 Operator : Instrument 65198
 Sample : brc3 control
 Misc : lot 68430; am 3
 ALS Vial : 23 Sample Multiplier: 1

Integration Parameters: autoint1.e
 Integrator: ChemStation

Method : D:\DATA\2016\852016a ta\psilocyn .D\TOXI-A 10115.M
 Title :

Signal : EIC Ion 371.00 (370.70 to 371.70): 02301003.D\data.ms

peak #	R.T. min	first scan	max scan	last scan	PK TY	peak height	corr. area	corr. % max.	% of total
1	3.899	10	22	30	BV	7696	119748	6.50%	3.056%
2	4.692	161	169	195	VB	59055	1040426	56.47%	26.550%
3	4.908	198	210	221	BV 2	4258	80854	4.39%	2.063%
4	5.389	221	299	305	VV 2	17955	1842508	100.00%	47.018%
5	5.462	305	312	315	VV	18452	537839	29.19%	13.725%
6	5.486	315	317	321	VB	18126	297364	16.14%	7.588%

Sum of corrected areas: 3918740

Signal : EIC Ion 473.00 (472.70 to 473.70): 02301003.D\data.ms

peak #	R.T. min	first scan	max scan	last scan	PK TY	peak height	corr. area	corr. % max.	% of total
1	4.694	142	170	193	BV	27681	513442	100.00%	60.058%
2	4.909	193	210	220	VV 2	3071	58418	11.38%	6.833%
3	5.174	220	259	279	PB	10912	283047	55.13%	33.109%

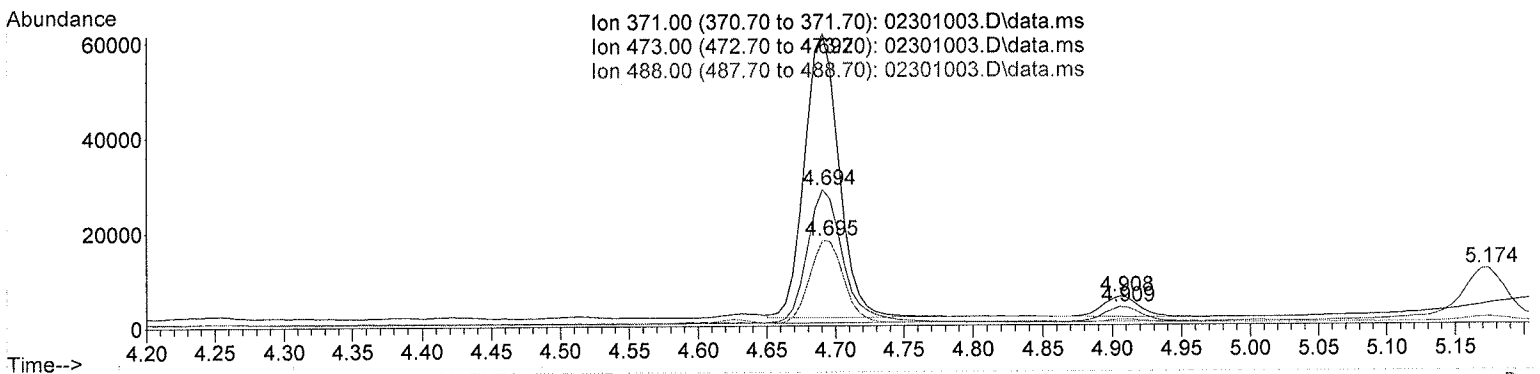
Sum of corrected areas: 854907

Signal : EIC Ion 488.00 (487.70 to 488.70): 02301003.D\data.ms

peak #	R.T. min	first scan	max scan	last scan	PK TY	peak height	corr. area	corr. % max.	% of total
1	4.695	163	170	180	VV	17444	299207	100.00%	100.000%

Sum of corrected areas: 299207

TOXI-A 10115.M Fri Mar 24 10:42:09 2017



2.4.4 Carboxy-THC QC Calculations

Run Date: 3/24/2017

Case Calculations:

Lab Case #: BRC3-68430

EIC Ion 371 Corr. Area: 1040426

EIC Ion 473 Corr. Area: 513442

EIC Ion 488 Corr. Area: 299207

473:371 Ratio: 0.493

488:371 Ratio: 0.288

Quality Control Calculations:

Retention Time acceptable range: 4.599 to 4.788

	<i>1st ctrl</i>	<i>2nd ctrl</i>
EIC Ion 371 Corr. Area:	<u>4177251</u>	<u>4494712</u>
EIC Ion 473 Corr. Area:	<u>1954435</u>	<u>2096523</u>
EIC Ion 488 Corr. Area:	<u>1237406</u>	<u>1334606</u>

Approximate minimum corrected area of 371 ion: ~ **835450**

<i>Ratio of 473:371</i>			
<i>1st ctrl</i>	<u>0.468</u>	<i>2nd ctrl</i>	<u>0.466</u>
			<i>avg.</i>
			0.467

Accepted Range
(+/- 20%) **0.374 - 0.561**

<i>Ratio of 488:371</i>			
<i>1st ctrl</i>	<u>0.296</u>	<i>2nd ctrl</i>	<u>0.297</u>
			<i>avg.</i>
			0.297

Accepted Range
(+/- 20%) **0.237 - 0.356**

Carboxy-calculation sheet
Revision 0 effective date 10/23/13
Issuing authority: Quality Manager



Area Percent Report

Data Path : D:\DATA\2017\3-24-17 cthc diluted\
 Data File : 02101002.D
 Acq On : 24 Mar 2017 10:03
 Operator : Instrument 65198
 Sample : positive control
 Misc : FE03121501 in neg lot 31517; am 3
 ALS Vial : 21 Sample Multiplier: 1

Integration Parameters: autoint1.e
 Integrator: ChemStation

Method : D:\DATA\2016\852016a ta\psilocyn .D\TOXI-A 10115.M
 Title :

Signal : EIC Ion 371.00 (370.70 to 371.70): 02101002.D\data.ms

peak #	R.T. min	first scan	max scan	last scan	PK TY	peak height	corr. area	corr. % max.	% of total
1	3.820	3	7	16	BV 2	8380	106986	2.56%	1.596%
2	3.905	16	23	32	PV	176582	2188831	52.40%	32.657%
3	3.988	32	38	48	PV 3	3309	55855	1.34%	0.833%
4	4.081	48	56	68	VV	4467	83130	1.99%	1.240%
5	4.637	153	159	163	PV	5377	90434	2.16%	1.349%
6	4.699	163	171	194	VV	249108	4177251	100.00%	62.324%

Sum of corrected areas: 6702488

Signal : EIC Ion 473.00 (472.70 to 473.70): 02101002.D\data.ms

peak #	R.T. min	first scan	max scan	last scan	PK TY	peak height	corr. area	corr. % max.	% of total
1	4.701	161	171	191	BV	117028	1954435	100.00%	100.000%

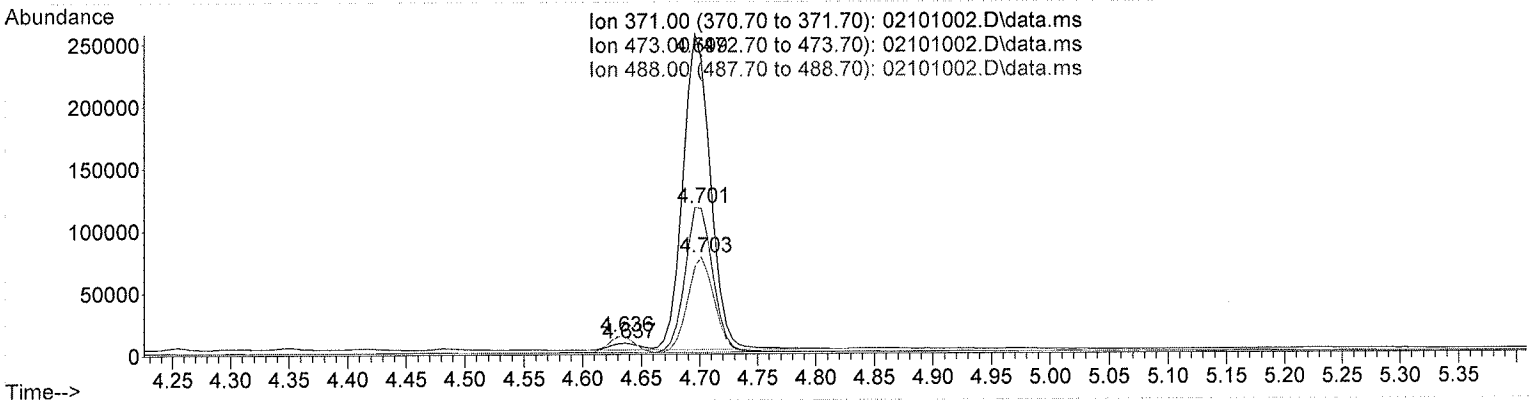
Sum of corrected areas: 1954435

Signal : EIC Ion 488.00 (487.70 to 488.70): 02101002.D\data.ms

peak #	R.T. min	first scan	max scan	last scan	PK TY	peak height	corr. area	corr. % max.	% of total
1	4.636	139	159	164	PV	13147	208232	16.83%	14.404%
2	4.703	164	171	188	VV	74782	1237406	100.00%	85.596%

Sum of corrected areas: 1445638

TOXI-A 10115.M Fri Mar 24 10:41:50 2017



[Handwritten signature]

Area Percent Report

Data Path : D:\DATA\2017\3-24-17 cthc diluted\
 Data File : 02101008.D
 Acq On : 24 Mar 2017 10:59
 Operator : Instrument 65198
 Sample : positive control
 Misc : FE03121501 in neg lot 31517; am 3
 ALS Vial : 21 Sample Multiplier: 1

Integration Parameters: autoint1.e
 Integrator: ChemStation

Method : D:\DATA\2016\852016a ta\psilocyn .D\TOXI-A 10115.M
 Title :

Signal : EIC Ion 371.00 (370.70 to 371.70): 02101008.D\data.ms

peak #	R.T. min	first scan	max scan	last scan	PK TY	peak height	corr. area	corr. % max.	% of total
1	3.814	3	6	15	PH 2	16392	383740	8.54%	5.124%
2	3.897	15	21	31	VV	173778	2317952	51.57%	30.953%
3	3.981	31	37	46	VV 3	4390	100798	2.24%	1.346%
4	4.074	46	54	66	VV	4535	105159	2.34%	1.404%
5	4.627	151	157	161	PV	5172	86250	1.92%	1.152%
6	4.688	161	169	190	VV	281995	4494712	100.00%	60.021%

Sum of corrected areas: 7488611

Signal : EIC Ion 473.00 (472.70 to 473.70): 02101008.D\data.ms

peak #	R.T. min	first scan	max scan	last scan	PK TY	peak height	corr. area	corr. % max.	% of total
1	4.690	160	169	190	PV	131309	2096523	100.00%	100.000%

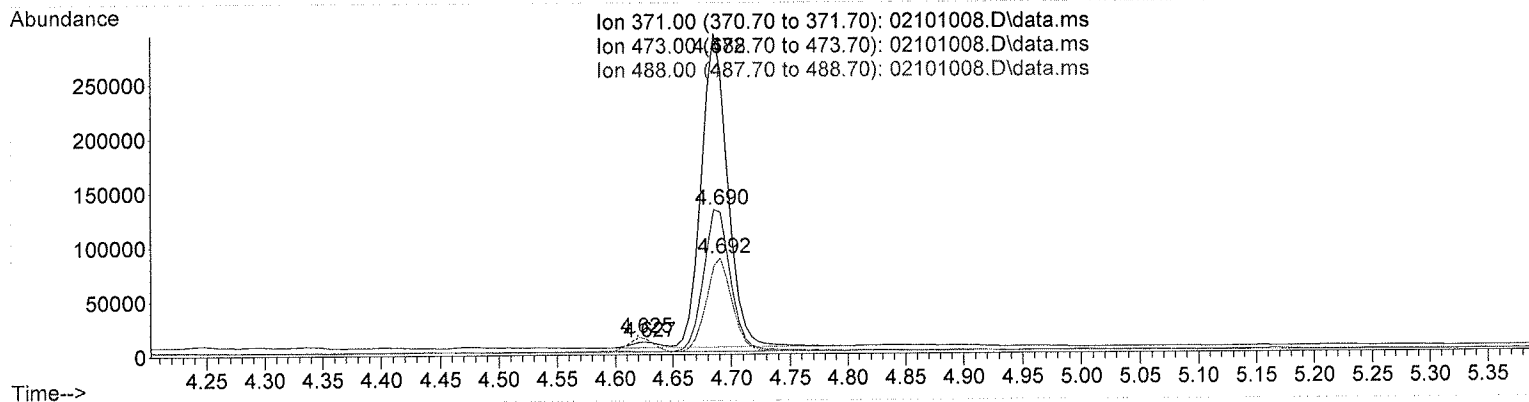
Sum of corrected areas: 2096523

Signal : EIC Ion 488.00 (487.70 to 488.70): 02101008.D\data.ms

peak #	R.T. min	first scan	max scan	last scan	PK TY	peak height	corr. area	corr. % max.	% of total
1	4.625	140	157	162	BV 2	12983	204227	15.30%	13.272%
2	4.692	162	169	189	VV	84611	1334606	100.00%	86.728%

Sum of corrected areas: 1538833

TOXI-A 10115.M Fri Mar 24 11:45:43 2017



[Handwritten signature]